



MOTORE / ENGINE

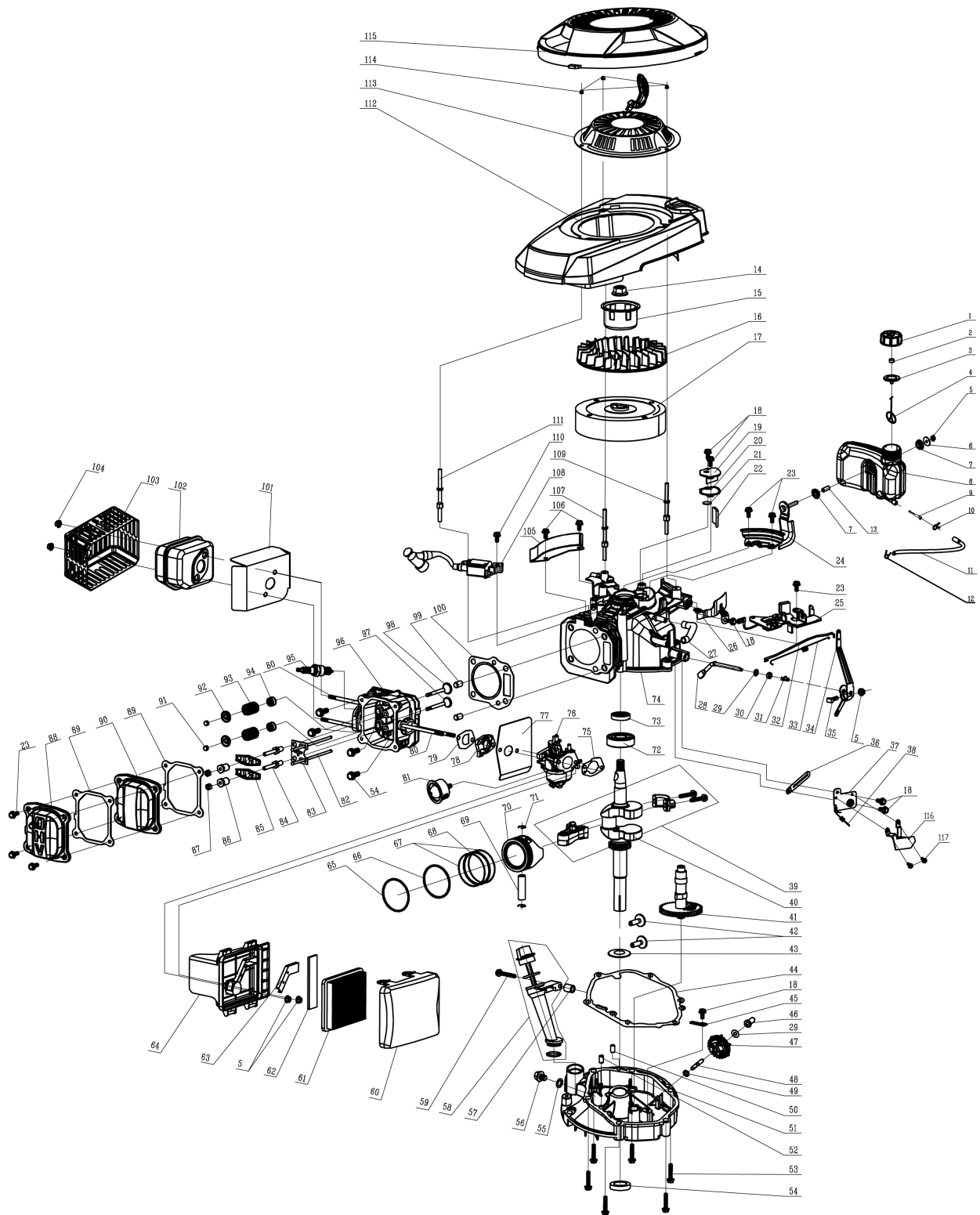
Mod. MVG-TX



ART. 92599

ESPLOSO RICAMBI / SPARE PARTS LIST

Motore



92599**MOTORE / ENGINE****Mod. MVG-TX**

Nr.	Codice	Descrizione	Description	Q.tà
1	RMG25170110000	Tappo Serbatoio	Fuel tank cap	1
2	RMGP65050106000	Spugnetta tappo serbatoio	Fuel tank cap sponge	1
3	RMGP65050102000	Guarnizione tappo	Fuel Tank Cap seal gasket	1
4	92486	Ritegno tappo	Connect cable of fuel cap	1
5	Standard	Dado Flangiato M6	Hex flange nuts	4
6	RMG60190310000	Rondella supporto Serbatoio	The oil tank mount big washer	1
7	RMG25310030000	Gommino antivibrante	Tank damping rubber pad	2
8	RMG25180230000	Serbatoio Benzina	Fuel tank body	1
9	RMGP65050500000	Filtro serbatoio	Filtering Net Duct of Fuel	1
10	RMG60230020000	Fascetta Tubo benzina	Fuel pipe lock clamp I	1
11	RMG25160020000	Tubo Serbatoio Benzina	Fuel pipe	1
12	RMG60230010000	Fascetta Stringitubo	Fuel pipe lock clamp II	1
13	RMG60240250000	Boccola / Distanziale	Fuel tank mounting bushing	1
14	RMG60140050000	Dado Volano M14X1,5	Hex flange nuts	1
15	RMG75210020000	Campana Avviamento	Starter hub	1
16	RMGP70B07040000	Ventola	Fan	1
17	92467	Volano	Flywheel assy	1
18	88621	Bullone M6X12	Bolt	6
19	RMGV510000000	Coperchio valvola sfiato	Respirator Cover Plate	1
20	RMGV510020000	Guarnizione coperchio sfiato	Respirator head gasket	1
21	RMGV510010000	Valvola di sfiato	Respirator valve plate	1
22	RMG75150010000	Filtrino olio	Oil filter	1
23	Standard	Bullone M6X14	Bolt	7
24	RMG75330060000	Piastra supporto serbatoio	Main bracket of fuel tank	1
25	92475	Dispositivo Freno Motore	Detent assy.	1
26	RMG75030070000	Deflettore aria	wind shield	1
27	92492	Tubo sfiato filtro aria	Waste pipe	1
28	RMGP65010105000	Leva regolatore giri	Rate-limiting rocker arm shaft	1
29	RMG60200490000	Guarnizione	Gasket	2
30	RMGP65010112000	Paraolio 6X11X4	Oil seal	1
31	Standard	Coppiglia a "R"	R type pin	1
32	RMGV510103000	Asta acceleratore	Handspike of Valve	1
33	RMGP65010601000	Molla asta acceleratore	Valve spring	1
34	RMGV510004000	Leva Acceleratore	Throttle rocker arm	1
35	92496	Bullone testa quadrata	Bolt	1
36	Standard	Fascetta	Clip	1
37	RMGP70B01060000	Meccanismo Acceleratore	Single phrase throttle assy.	1
38	RMG60410640000	Molla regolatore giri	Throttle control spring	1
39	92476	Biella Completa	Connecting rod assy.	1
40	92495	Albero Motore Completo	Crankshaft assy.	1
41	92477	Albero a camme cpl.	Camshaft assy.	1
42	RMGP65080300000	Alzavalvole	Pin	2
43	RMGV510009000	Rondella / Guarnizione ingr.	Clockwise gear gasket	1

92599**MOTORE / ENGINE****Mod. MVG-TX**

Nr.	Codice	Descrizione	Description	Q.tà
44	RMGV510007000	Guarnizione carter motore	Respirator head gasket	1
45	RMGP65010206000	Piastrina ingranaggio regol.	rate-limiting gear shaft	1
46	RMGP65010202000	Sede Regolatore	Sliding Sleeve	1
47	92478	Ingranaggio Regolatore	Rate-limiting gear assy.	1
48	RMGV410001000	Albero Regolatore Giri	Rate-limiting gear shaft	1
49	RMG60200060000	Guarnizione	Gasket	1
50	RMG60280030000	Spina centraggio carter	Spacing pin	1
51	RMGV510008000	Coperchio Carter Motore	Crank box cover	1
52	RMG60280050000	Spina centraggio carter	Spacing pin	1
53	Standard	Bullone M8X50	Locking bolt	10
54	RMGP65010210000	Paraolio 25X38X7	Oil seal	1
55	92498	Guarnizione vite drenaggio	Oil drain bolt gasket	1
56	92497	Vite drenaggio olio	Oil drain bolt	1
57	92511	Tappo Rabbocco Olio Cpl.	Lubricating Gauge Assy	1
58	92499	Distanziale tappo olio	Distance Sleeve of Lub. Setting	1
59	Standard	Bullone M6X50	Bolt	1
60	RMGP65040101000	Coperchio filtro aria	Air Filter Upper Cover	1
61	RMGP65040104000	Filtro aria in carta	Paper filter	1
62	RMGP65040106000	Filtro aria spugna	Coarse sponge filter	1
63	RMGP65040103000	Coperchietto sede filtro	Exhaust Gas Cover Board	1
64	RMGP65040102002	Sede Filtro aria	Air filter base assy.(II)	1
65	RMG75130110000	Segmento I	Piston Ring II	1
66	RMG75130120000	Segmento II	Piston Ring II	1
67	RMG75090050000	Raschiaolio	Guide Rail	2
68	RMG75000060000	Anello / Fascia	Bushing Ring	1
69	RMGH140002000	Spinotto	Piston pin	1
70	RMG75120070000	Pistone	Piston	1
71	RMGH140003000	Anello fermo spinotto	Washer	2
72	RMG60010140000	Cuscinetto 6205	Rolling bearing	1
73	92494	Paraolio 25X40X7	Oil seal	1
74	RMG75500140000	Carter Motore Completo	Crankshaft box assy.	1
75	RMGP65030500000	Guarnizione carb./filtro aria	Empty filter paper pad	1
76	RMG75410610000	Carburatore	Carburetor	1
77	92482	Guarnizione flangia II	Intake pipe paper pad II	1
78	RMGP70B03040000	Flangia termica	Air Inlet Pipe	1
79	RMGP70B03020000	Guarnizione flangia I	Intake pipe paper pad I	1
80	60080030000	Prigioniero M6X94	Dual-head bolts	4
81	RMGP65051000001	Primer	Prime button II	1
82	RMGP70B08020000	Asta alzavalvola	Push rod	2
83	RMGP70B08030000	Piastrina Guida asta	Push rod director plate	1
84	92512	Vite supporto bilanciere	Valve rocker arm support bolts	2
85	RMGP65080200000	Bilanciere	Rocker of Valve	2
86	92513	Dado registro valvole	Valve adjustment nut	2

92599**MOTORE / ENGINE****Mod. MVG-TX**

Nr.	Codice	Descrizione	Description	Q.tà
87	92514	Controdado registro valvola	And nuts	2
88	92515	Coperchio Valvole II	Cylinder head cover II	1
89	92483	Guarnizione Coperchio	Respirator head gasket	2
90	92516	Coperchio Valvole I	Cylinder head cover I	1
91	RMGP65081100000	Pastiglia Valvola	Top Cover of Exhaust Valve	2
92	92517	Sede Molla valvola	Spring Coil of Exhaust Valve	2
93	RMGP70B08080000	Molla Valvola	valve spring	2
94	92518	Anello tenuta valvola	Oil seal assy	2
95	79567	Candela	Spark plug	1
96	RMGP70B02010000	Testata completa	Cylinder head assy.	1
97	RMGP70B08070000	Valvola Scarico	Exhaust Valve	1
98	RMGP70B08060000	Valvola Aspirazione	Intake Valve	1
99	RMG60280020000	Spina centraggio carter	Spacing pin	2
100	RMGP70B02040000	Guarnizione testa/cilindro	Cylinder head gasket	1
101	RMGP65060200000	Guarnizione Marmitta	Muffler insulating pad	1
102	92485	Marmitta completa	Muffler assy.	1
103	92523	Protezione marmitta	Muffler cover assy.	1
104	Standard	Dado autobloccante M6	Self-locking nut	2
105	92519	Deflettore aria	wind shield	1
106	Standard	Bullone M6X16	Bolt	2
107	RMG60080290000	Bullone supporto Cover I	Double-head bolts I	1
108	RMG75370032000	Bobina completa	Ignition assy.	1
109	RMG60080210000	Bullone supporto Cover II	Double-head bolts II	1
110	Standard	Bullone M6X30	Bolt	1
111	RMG60080300000	Bullone supporto Cover III	Double-head bolts III	1
112	RMG25190250000	Plastica Copri-motore II	The transparent cover	1
113	RMG65070100000	Avviamento completo	Pull starter assy.	1
114	88564	Dado Cieco M6	Cap nut	3
115	RMG25190210086	Plastica Copri-motore I	The transparent cover	1
116	Standard	Bullone M6X10	Bolt	2
117	92524	Pannello protezione acceleratore	Single speed control panel	1